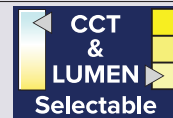




Client:	
Order #:	
Project:	
Type:	



DESCRIPTION

Illuminate your building with the COMET LED Wall Pack. Stylish, durable, and energy-efficient—perfect for parking lots, warehouses, schools, and large commercial spaces.

FEATURES

- Adjustable output with selectable Wattage and CCT
- Dusk-to-dawn operation with photocell adder
- Energy-saving Hi/Lo control via optional motion sensor
- Emergency-ready with optional battery backup driver

CONSTRUCTION & ELECTRICAL

- Quick-install removable mounting bracket
- IP65 wet location rated
- Rugged die-cast aluminum
- 0–10V dimming, 120–277VAC input
- Power factor ≥ 0.9 , THD $\leq 10\%$

PERFORMANCE DATA

EFFICACY

117 - 150 Lumens per Watt (LPW)

CCT/CRI

30K, 40K or 50K, 70+ CRI

RATED LIFE

>100,000+ Hours (L70)
>25,000+ Hours (L90)

LUMEN OUTPUT

Lumen Output Ranges from
3,125 to 8,183 Lumens

OPERATING TEMPS

-40°C to +50°C Ambient

WARRANTY

5 year Standard

ORDERING INFORMATION

COMET	/		/		/		/		/		/		/		/		/	
SERIES		WATTAGE		CCT		DISTRIBUTION		VOLTAGE		DRIVER FEATURES		FINISH		PHOTOCELL		CONTROLS		EMERG. BATT.

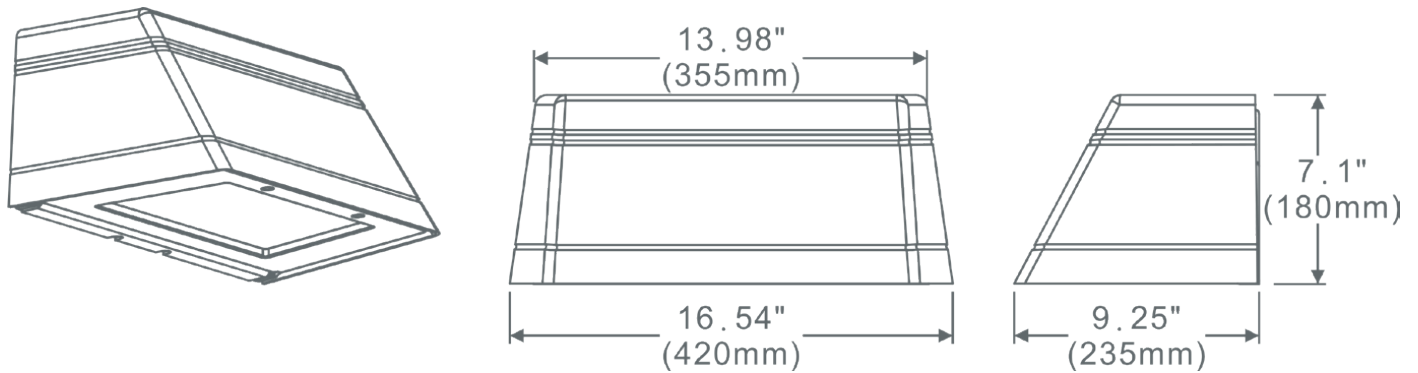
FIXTURE SERIES	
COMET	LED Architectural Wall Pack
WATTAGE	
65WS	25W, 45W, 65W Select. (3,125lm – 8,183lm)*
CRI/CCT	
CS	70+CRI, 30K, 40K, 50K CCT Select.
DISTRIBUTION	
FT	Forward Throw Optical Distribution
WT	Wide Throw Optical Distribution

*Delivered Lumens based on 5000K

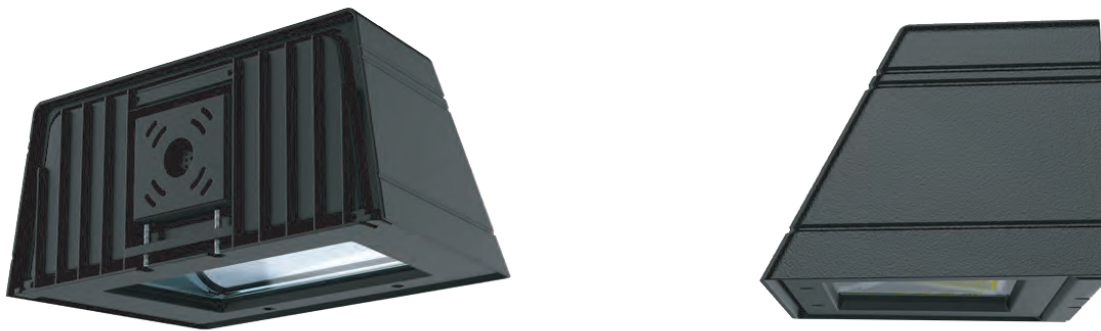
VOLTAGE	
UNV	Universal 120-277VAC
DRIVER FEATURES	
10V	0-10V Dimming
FINISH	
BZ	Bronze Powder Coat Finish (Standard)
PHOTOCELL	
PC	120-277 VAC Button Photocell

CONTROLS	
MWD	Motion Sensor, Microwave Occupancy, Direct Mount
MDLD	Motion PIR Occ. & Daylight Harv., Direct Mount
MDLDBA	Motion PIR Occ. & Daylight Harv., Direct Mount, Aux 12V Input, Bluetooth App Control
EMERGENCY BATT. BACKUP	
EM8	8 Watt (900 lm) 90 Min. Emerg. Batt.
SURGE PROTECTION	
10KV	10,000 V Surge Protection
WARRANTY	
-	5 Year Warranty (Standard)

DIMENSIONS



OTHER VIEWS



EMERGENCY BATTERY OPERATION

The emergency battery backup (EM option) is integral to the luminaire - no external housing required! This design provides reliable emergency operation while maintaining the aesthetics of the product. Included metal test button makes scheduled maintenance and emergency battery operation verification easy with no need to open the fixture.

The emergency battery will power the luminaire for a minimum duration of 90 minutes (maximum duration of three hours) from the time supply power is lost, per International Building Code Section 1006 and NFPA 101 Life Safety Code Section 7.9, provided luminaires are mounted at an appropriate height and illuminate an open space with no major obstructions.

The examples below show illuminance of 1 fc average and 0.1 fc minimum of the single-engine Type IV product in emergency mode.

